



بناء
BEN'A

للصناعات الحديدية
STEEL INDUSTRIES



ABOUT US:

BENA STEEL INDUSTRIES -BSI-

- ❖ Commenced business in 1993 as a Coil Service Center. It has since grown to become the largest center for flat products [Cut-To-Length] and slitting of Ferrous & Non-Ferrous coils in Saudi Arabia.
- ❖ BSI strived into diversification & stepped up to another new levels in the Industry to Steel Fabrication facility, Metal Forming & Tube Manufacturing.
- ❖ The company has an unrivalled reputation as a major supplier to the commercial & industrial construction, electrical and oil & gas industrial sectors. Closely associated to the nation's rise & aiming to be an industrial hub in the GCC as well as the Mena Region.



- Years of experience has led the company to expand into downstream industries. It is now fully integrated production units producing a wide range of products and services which includes:

- ❖ Slitting & Shearing steel coils in Hot & Cold Rolled- Plain & Chequered, Galvanized, Galvanized & Annealed, Electro-Galvanized, Stainless Steel, on Steel, Aluzinc as well as Aluminum.
- ❖ Pre-painted Corrugated Steel Sheets.
- ❖ Powder Coating and Painting Facility.
- ❖ Design & Manufacturing under OEM with Fuji Motors — Japan for small Construction Machinery Such as Asphalt Cutters, Power Trowels Machines, Plate Compactors, Concrete Vibrators.
- ❖ Design & Manufacturing of Wheelbarrows and Gas Cylinder Trolleys.
- ❖ Nuts, Bolts and Door hinges & Hand Shovels.
- ❖ Stainless Steel Sinks.
- ❖ Structural Steel Fabrication.
- ❖ Manufacture of Steel Square / Rectangular & Round Hollow Tubes.
- ❖ Annual production capacity of about 300,000 metric tons. BENA Steel Industries' professionalism, innovation and precision are recognized by customers who benefit from its consistent excellence in quality and service.
- ❖ The company has attained ISO 2008-9001 and ISO2004-14001 certification to ensure the consistency of quality products and services are maintained all the time.
- ❖ Its Fabrication facility is also approved by Saudi Aramco, SABIC and Royal Commission of Jubail & Yanbu.



VISION

To be pioneers and leaders in providing materials, innovative services and solutions for all the industries and projects that requires iron & steel in GCC and MENA.



MISSION

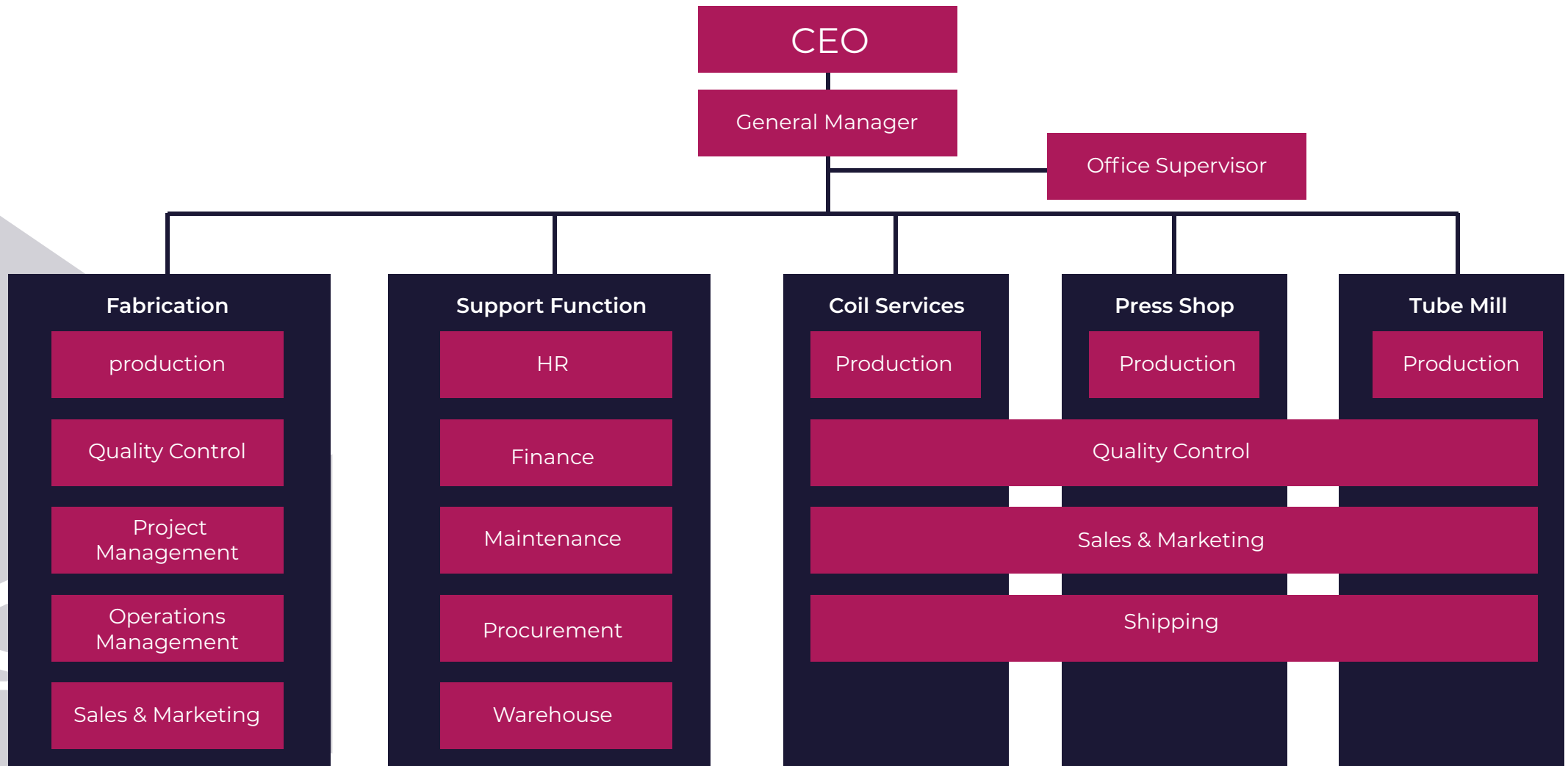
Our dedicated commitment to maintain our customers satisfactions and to provide them with a quality manufacturing services in an environment of continuous improvement that's participate in their growth and exceeding their expectations put us in continuous race to adopt the highest standards of professionalism and to follow the latest means of tech through investing in modern technology and state-of-art machinery.



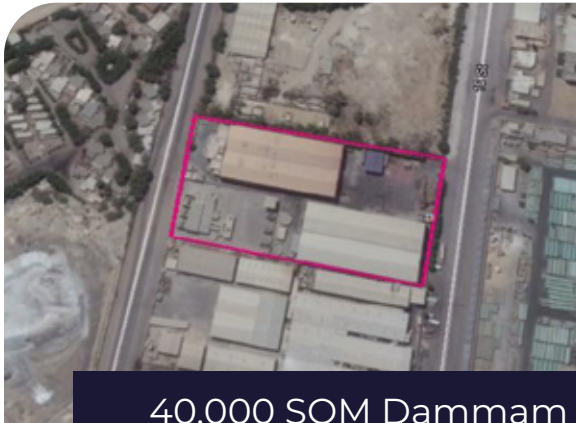
OUR VALUES

- **Work Ethic** To attract and retain quality competent employees who excel in their career, demand excellence from themselves and their co-workers. Provide opportunities and give encouragement to develop and enhance their profession skills and technical experience.
- **Employees** The greater value is our people. They are the key to our success. Each member of our organization has equal opportunity in an environment that adopts trust, involvement, and communication.
- **Customers** Our customers pay our salaries, we are committed to provide services that meet or exceed the expectations of both internal and external customers. All service, quality, delivery, and support efforts must meet this goal.
- **Commitment & Accountability** Each individual and every team is accountable and committed to the organization and its customers for all actions and results.
- **Integrity** No compromise in quality, service or commitment.
- **Improvement** We know that sustained success depends on our ability to continually improve the quality, cost, and timeliness of our products and services. We strive for continuous improvement in all of our operations, which provides opportunities for personal, professional, and organizational growth.
- **Equality** BENA Steel Industries is committed to offering equal employment opportunities to all qualified applicants and members on an equal basis, regardless of age, race, sex, religion, national origin, disability, or other circumstances
- **Health, Safety and Environmental (HSE)** Implement, establish and continuously improving Health, Safety and Environmental Programs that exceed industry standards to prevent harm to people, property, process and to the environment through a management system that is effective, efficient and expects excellence. Promoting a proactive approach and solutions to health, safety and environmental at all levels.

FUNCTIONAL STRUCTURE



INDUSTRIAL FACILITIES



40,000 SQM Dammmam
1st Industrial City



16,000 SQM Dammmam
1st Industrial City



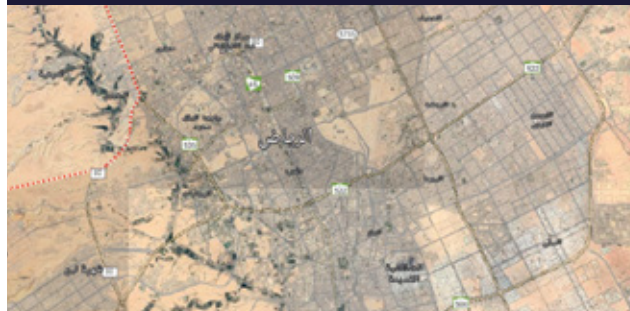
12,000 SQM Dammmam
2nd Industrial City

SALES OFFICES

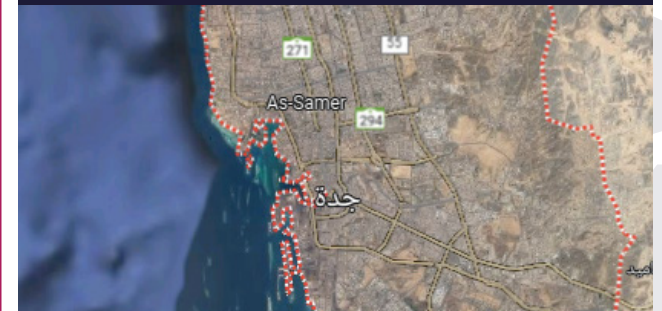
📍 DAMMMAM

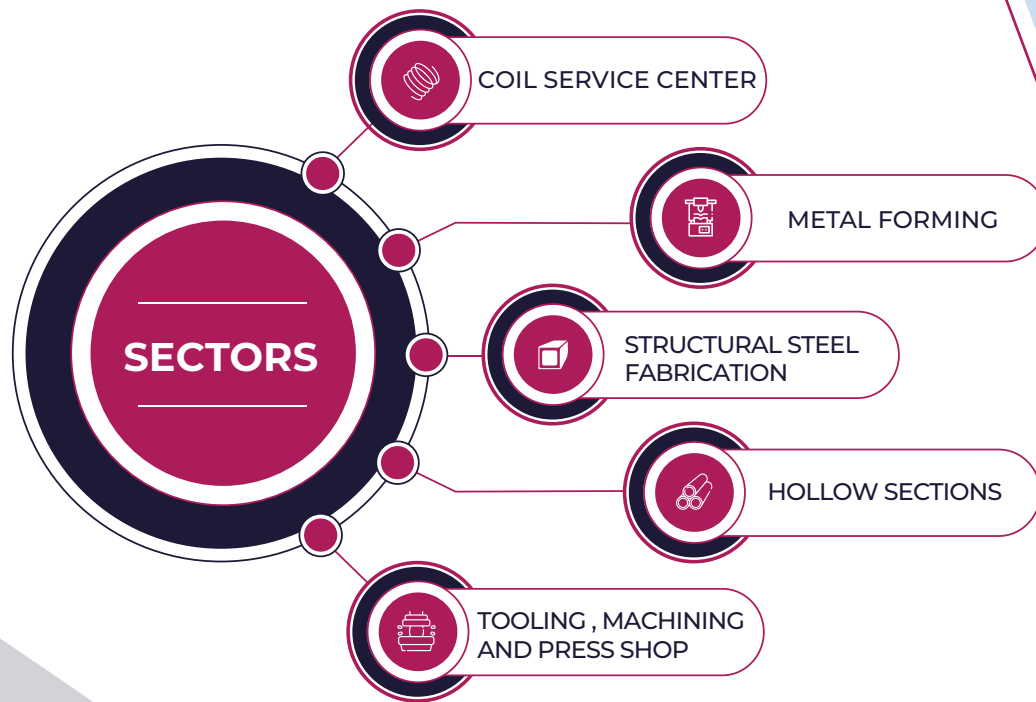


📍 RIYADH



📍 JEDDAH





COIL SERVICE CENTER

BENA STEEL OPERATES A FULL- FLEDGED COIL SERVICE CENTER EQUIPPED WITH THE LATEST STATE OF THE ART AUTOMATICALLY OPERATED SLITTING & CUT-TO- LENGTH AND SHEET CORRUGATION LINES. THE STEEL COIL SERVICE CENTRE PROCESSES STEEL COILS INTO SKELP (BABY) COILS AND SHEETS / PLATES BY SLITTING OR SHEARING THEM TO THE SIZE AS REQUIRED BY THE CUSTOMER.



CUT TO LENGTH LINES

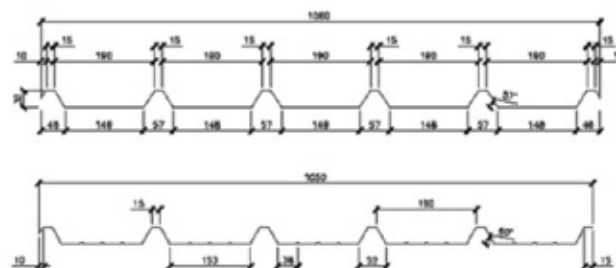
NUMBER OF MACHINES	1	2	3
MACHINE TYPE	Mechanical Shear	Mechanical Shear	Rotary Shear
MAX WIDTH MM	1300	2000	1600
MIN THICKNESS MM	0.50	2.00	0.30
MAX THICKNESS MM	3.00	16.00	2.80
MIN LENGTH MM	1000	1200	550
MAX LENGTH MM	8000	18000	5800
COIL ID MM	508 - 610 -710	508 - 610 -710	508 - 610
COIL OD MM	1500	2000	1800
MAX COIL WEIGHT TON	15	30	20
MATERIAL	HR- HRC-CR-GI-AZ-SS-PPGI-ALUM-ETP		

SLITTING LINES

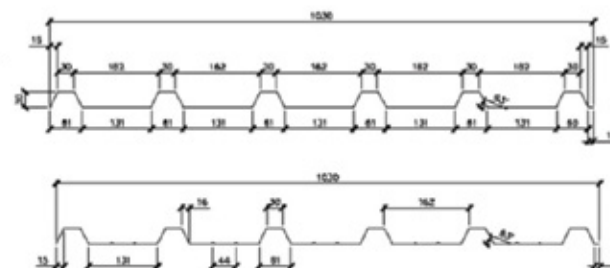
NUMBER OF MACHINES	1	2
MACHINE TYPE	SLITTING	SLITTING
MIN THICKNESS MM	0.23	0.40
MAX THICKNESS MM	1.20	3.50
MIN LENGTH MM	100	100
MAX LENGTH MM	1010	1550
COIL ID MM	508-610	750-720-610-508
COIL OD MM	1300	1800
MAX COIL WEIGHT TON	10	22
MATERIAL	HR- HRC-CR-GI-AZ-SS-PPGI-ALUM-ETP	

NUMBER OF MACHINES	MAX WIDTH MM	MIN THICKNESS MM	MAX THICKNESS MM	MIN LENGTH MM	MAX LENGTH MM	COIL ID MM	COIL OD MM	MAX COIL WEIGHT TON	MATERIAL
1	1220	0.30	0.70	500	12000	508-610	1500	7	PPGI - ALUM - GI

CORRUGATED SHEET PROFILE # 1
(TOP AS PER LINEAR DIMENSIONS)
(BOTTOM AS PER EXACT ANGLE)
K.S.A (CURRENT MACHINE SETTING)

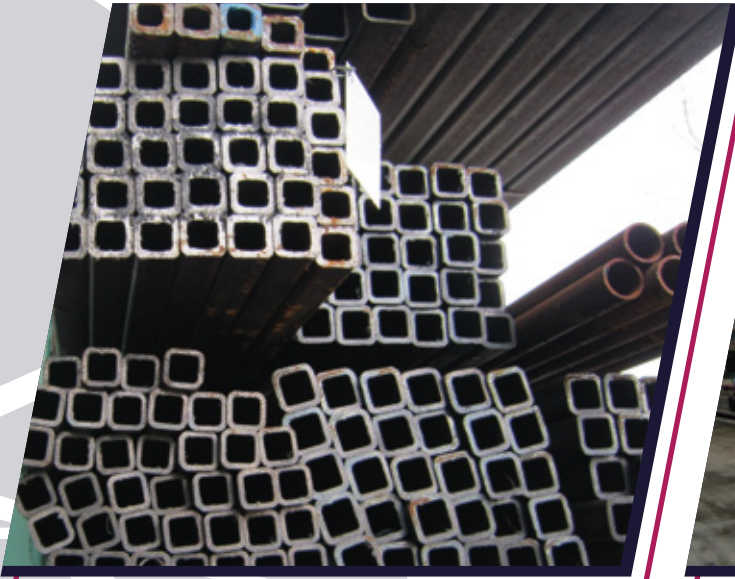


CORRUGATED SHEET PROFILE # 2
(TOP AS PER LINEAR DIMENSIONS)
(BOTTOM AS PER EXACT ANGLE)
KOREAN SETTING



STRUCTURAL STEEL&FABRICATION

The structural steel and fabrication center was the third phase of BENA Steel Industries. The fabrication center has been involved with all type of fabrication. starting from the oil and gas sector to the commercial sector. BSI successfully completed many vital projects for Saudi Aramco and blue -chip companies. BSI has marked itself as one of the main highly technical fabricators in the region.



RANGE OF PRODUCTS

- | | |
|------------------------|----------------------------------------|
| 1 Beams/Girders | 11 Sign Boards |
| 2 Columns | 12 Stair Treads |
| 3 Bracings | 13 Anchor Bolts |
| 4 Rafters | 14 Stair Stringers |
| 5 Purlins | 15 Caged Ladders |
| 6 Brackets | 16 Truss Members |
| 7 Sleepers | 17 Monorail Beams |
| 8 Handrails | 18 Fabricated Gratings |
| 9 Pipe Racks | 19 Fabricated Tread Plates |
| 10 Base Plates | 20 Compression & Bearing Plates |

KEY FUNCTIONAL AREAS

DURING DETAILING, ALL STRUCTURE INFORMATION SUCH AS SHAPES, SIZE, GRADE ETC... FROM QUOTATION AND ESTIMATION STAGE WILL BE AGREED AS PER CONTRACT OR AS PER KEY PLAN INFORMATION PROVIDED BY THE CUSTOMER/CLIENT.

1

DETAILED SHOP DRAWINGS WITH BILL OF MATERIALS ARE MADE & CHECKED. ALL DRAWINGS ARE GENERATED WITH CLEAR LEGIBILITY FOR THE CUSTOMER / THIRD PARTY CHECKER.

2

SECURE APPROVAL OF SHOP DRAWINGS. ONCE APPROVED BY THE CUSTOMER, THESE DRAWINGS ARE SENT TO US AS A PROOF THAT THE STRUCTURE IS "READY FOR CONSTRUCTION". IN CASE IF THE CHECKER HAS FOUND ANY DISCREPANCY, HE WILL ADVISE US TO MAKE THE NECESSARY CHANGES.

3

ENGINEERING DEPARTMENT WILL RELEASE ALL APPROVED STRUCTURE DRAWINGS INTO THE SHOP FLOOR FOR FABRICATION WITH A STAMP OF "APPROVED FOR PRODUCTION".

4

IF THE CUSTOMER MAKES SOME CHANGES/REVISIONS ON THE APPROVED STRUCTURE, THEY WILL INFORM US WITH SUFFICIENT INFORMATION SO THAT THE CHANGES COULD BE MADE & THE AFFECTED PARTS WILL BE REVISED AS PER THE CUSTOMER'S REQUIREMENTS & THE OLD DRAWINGS WILL BE REPLACED WITH THE NEW ONE ALONG WITH INFORMATION OF THE CHANGES.

5

LIST OF MACHINERY

PEDDINGHAUS — CNC PLATE PROCESSOR PUNCHING & PLASMA CUTTING MACHINE

PEDDINGHAUS ~ CNC ANGLE MASTER CUTTING PUNCHING & MARKETING MACHINE

PEDDINGHAUS — CNC METAL BAND SAWING MACHINE

PEDDINGHAUS — CNC BEAM DRILLING MACHINE 1250

ELECTROPNEUMATIC — NC PIPE BENDING MACHINE

AMADA - BEAM LINE CUTTING MACHINE (H900-)

LE CENTRIC SHC 370 - HOLE NOTCHING MACHINE

AMADA — BEAM THE CUTTING MACHINE (H900-)

ESAB — CNC OXY — ACETYLENE CUTTING MACHINE

RADIAL DRILLING MACHINE (UP TO 45 MM)

OVERHEAD E01 CRANE (10 TONS) - 5 UNITES

OVERHEAD EOT CRANE (5 TONS) - 2 UNITS

OTC PLASMA ROBOTO AIMEGA AX — V6L

COMCO - CNC PIPE BENDING MACHINE

VICTOR - SEMI-AUTOMATIC GAS CUTTING MACHINE (02 UNITS)

MAGNETIC PORTABLE DRILLING MACHINE (02 UNITS)

AMADA - MULTIPLE CUTTING MACHINE

DONG JIN — SHEARING MACHINE (3M)

OTC - PLASMA CUTTING (M — 12000)

DARLEY BENDING MACHINE (6M)

DARLEY SHEARING MACHINE (6M)

OTC — PLASMA CUTTING (M — 3000)

TATA HANDRAIL FIXTURE MACHINE

HYDRAULIC PRESS (500 — 35T)

KINGSLAND - IRON WORKER

FABRICATION CAPABILITY IN ASSEMBLY & FABRICATION CAPABILITY IN PAINTING



SMAW — WELDING MACHINES (20 UNITS)

FCAW — WELDING MACHINES (16 UNITS)

SAW — WELDING MACHINE LINCOLN ELECTRIC SOLID WELD LT 7

HOLDING ELECTRODE QUIVER (15 UNITS)

HOLDING ELECTRODE OVEN — KEEN KH 500

STIERLI — BEAM POSITIONER FOR WELDING

HYSTER — FORK LIFT (7 TONNER)

LINDE SIDE LOADER (5 TONNER)



GLEMCO HOPER (1 TON) (02 UNITS)

BCE - SHOT BLASTING MACHINE

HYSTER — FORK LIFT (7 TONNER)

BAOLI ~ FORM LIFT (5 TONNER)

CONTINUOUS BLASTING (AUTOMATIC) & PAINTING (MANUAL)
AND OVEN CURING (AUTOMATIC) SYSTEM

INGERSOLLRAND (XP 8.6 — 750 BAR) (COMPRESSOR MACHINE)

GRACO (XTREME 70) AIRLESS MACHINES (03 UNITS)

GRACO (XTREME 56.1) AIRLESS MACHINE

STATEMENT OF MISSION, VISION & CORE VALUES

BENA Steel Industries has adopted the stated Mission, Vision & Core Values to define its business strategy.

MISSION

Customers are the sole purpose of our existence. We shall do whatever is necessary within our means to retain & grow with them

VISION

- ◆ BENA Steel Industries will be the most customer focused Metal Servicing company in the Kingdom & the MENA region.
- ◆ While metal servicing will be its core business, it will continue to diversify its activities into other value added businesses using its core competence in metals.
- ◆ To achieve this end, BENA Steel Industries will invest adequate resources in technology, people development & market penetration.
- ◆ By 2030, BENA Steel Industries shall substantially increase its market share to a near leadership position.

SECTION WELDING SECTION:

Hollow Section:

As BENA Steel industries is committed to keep the diversifying of its production that's in line with its main activity as a coil service center, the company has launched its first ERW tube mill in 2012 opening by that the door for more investments in the field, and since then the investment and development in this field in ongoing.

Welded hollow sections with a longitudinal weld are mainly made with Electrical Resistance Welding (ERW) processes. A strip is shaped by rollers into a cylindrical shape and welded longitudinally. The edges are heated by electrical resistance. The rollers push the edges together, resulting in a pressure weld. The outer part of the weld is trimmed immediately after welding. Rectangular hollow sections are made by deforming circular hollow sections through forming rollers.



		THICKNESS MM												
		1.00	1.20	1.40	1.50	1.80	2.00	2.50	2.80	3.00	3.50	3.80	4.00	4.50
CHS	3/4" - 26.90 MM	✓	✓	✓	✓	✓	✓	✓	✓	✓				
	1.00" - 33.80 MM	✓	✓	✓	✓	✓	✓	✓	✓	✓				
	1.1/4" - 42.50 MM		✓	✓	✓	✓	✓	✓	✓	✓	✓	✓	✓	✓
	1.1/2" - 48.40 MM		✓	✓	✓	✓	✓	✓	✓	✓	✓	✓	✓	✓
	2.00" - 63.30 MM		✓	✓	✓	✓	✓	✓	✓	✓	✓	✓	✓	✓
	2.1/2" - 76.00 MM		✓	✓	✓	✓	✓	✓	✓	✓	✓	✓	✓	✓
	3.00" - 88.80 MM		✓	✓	✓	✓	✓	✓	✓	✓	✓	✓	✓	✓
	4.00" - 114.30 MM		✓	✓	✓	✓	✓	✓	✓	✓	✓	✓	✓	✓
SHS	20 X 20		✓	✓	✓	✓	✓							
	25 X 25	✓	✓	✓	✓	✓	✓	✓	✓					
	30 X 30	✓	✓	✓	✓	✓	✓	✓	✓					
	40 X 40	✓	✓	✓	✓	✓	✓	✓	✓	✓	✓	✓		
	50 X 50	✓	✓	✓	✓	✓	✓	✓	✓	✓	✓	✓	✓	
	60 X 60	✓	✓	✓	✓	✓	✓	✓	✓	✓	✓	✓	✓	
	75 X 75	✓	✓	✓	✓	✓	✓	✓	✓	✓	✓	✓	✓	
	80 X 80		✓	✓	✓	✓	✓	✓	✓	✓	✓	✓	✓	
RHS	100 X 100		✓	✓	✓	✓	✓	✓	✓	✓	✓	✓	✓	
	30 X 15	✓	✓	✓	✓	✓	✓	✓	✓	✓	✓	✓		
	40 X 20	✓	✓	✓	✓	✓	✓	✓	✓	✓	✓	✓		
	50 X 25	✓	✓	✓	✓	✓	✓	✓	✓	✓	✓	✓		
	60 X 30	✓	✓	✓	✓	✓	✓	✓	✓	✓	✓	✓		
	80 X 40	✓	✓	✓	✓	✓	✓	✓	✓	✓	✓	✓		
	60 X 60	✓	✓	✓	✓	✓	✓	✓	✓	✓	✓	✓		
	100 X 50	✓	✓	✓	✓	✓	✓	✓	✓	✓	✓	✓		
	120 X 60	✓	✓	✓	✓	✓	✓	✓	✓	✓	✓	✓		

METAL FORMING

Metal forming has been a key element of BSI since its opening; the process of metal forming includes a wide variety of manufacturing processes. Metal forming processes are characteristic in that the metal being processed is plastically deformed to shape it into a desired geometry.

Tooling, Machining and Press Shop

With its strong foundation in the steel business, it was only natural for BSI to move forward to other related opportunities. The Pressings Division emerged to meet the growing demand for steel forming and other construction machinery.

Pressings division is also engaged in customer required pressings on job work basis. With over 25 presses under its belt having capacities ranging from 5 tons to 600 tons and a wide array of dies & tools and also a well-equipped tool-room to back it up, Pressings Division of BSI is fully equipped to take on customer specified pressings requirements, e.g. blanking, punching, drawing, swaging, forming, etc.



WE ARE APPROVED MEMBERS AMONG



أرامكو السعودية
saudi aramco



الشركة السعودية للكهرباء
Saudi Electricity company





بناء
BEN'A

للصناعات الحديدية
STEEL INDUSTRIES



4781 King Fahad Ibn Abdulaziz Road
34th Street, 1st Industrial City
Dammam 32234 - 7789
Kingdom of Saudi Arabia



info@benasteel.com



+966 13 847 2685